

Certificate II in Electro-technology (Career Start)

COURSE OUTLINE

Training Provider: AGA Apprenticeships Plus
(RTO: 3829)

Course Code: UEE22011

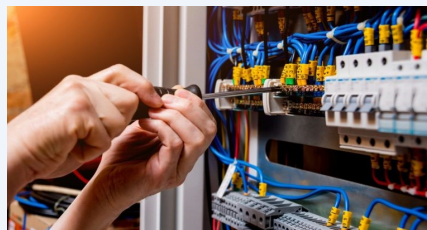
Location: Somerville Secondary College

Duration: 2 Year program

Time: 1st Year: Wednesday 12.30—4pm

2nd Year: Wednesday 8.30—12noon

Cost: Please see your VET Coordinator to confirm cost details.



ELECTRICAL

Description:

This qualification covers competencies for work entry program providing grounding in safety and basic skills and knowledge for work in any electro-technology discipline.

Contribution to the VCE/VCAL:

Students undertaking this program are eligible for Units at 1-2 & 3 on completion.

Sample Units of Study:

UEENEE101A Apply Occupational Health & Safety regulations, codes & practices
In the workplace

UEENEE141A Use of routine equipment/plant/technologies in an energy sector
environment

UEENEE142A Apply environmentally & sustainable procedures in the energy
sector

UEENEE179A Identify & select components, accessories and materials for energy
sector work activities

Certificate II in Electro-technology (Career Start)

Course Code: UEE22011



Sample Units of Study: continued

| | |
|--------------|---|
| CPCCOHS1001A | Work safely in the construction industry |
| UEENEEE130A | Provide solutions and report on routine electro-technology problems |
| HLTAID001 | Provide cardiopulmonary resuscitation |
| UEENEEE148A | Carry out routine work activities in an energy sector environment |
| UEENEEE104A | Solve problems in multiple d.c circuits |
| HLTAID001 | Provide cardiopulmonary resuscitation |
| UEENEEE143A | Produce routine tools/ devices for carrying out energy sector work activities |
| UEENEPP024A | Attach cords and plugs to electrical equipment for connection to a single phase 230 volt supply |

What to bring:

Students are required to wear sleeveless overalls (blue) and safety work boots (steel cap)

Structured Workplace Learning (SWL) - Recommended but not mandatory.

Further Study:

Certificate III in Plumbing (Plumbing Apprenticeship)

Certificate IV in Plumbing and Services (specialising in Operations)

Please note: *These details are subject to change and will require confirmation by the Registered Training Provider or TAFE.*

VET enrolments are processed through secondary school VET Coordinators. If you are interested in completing this program, please contact your school VET Coordinator.

ELECTRICAL

