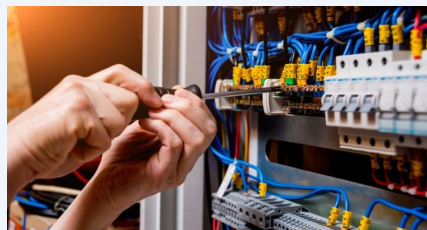


## Certificate II in Electro-technology (Career Start)

### COURSE OUTLINE

<b>Training Provider:</b>	AGA Apprenticeships Plus (RTO: 3829)
<b>Course Code:</b>	UEE22011
<b>Location:</b>	Somerville Secondary College
<b>Duration:</b>	1 Year program
<b>Time:</b>	Fridays 9am—3pm
<b>Cost:</b>	Please see your VET Coordinator to confirm cost details.



**ELECTRICAL**

#### Description:

This qualification covers competencies for work entry program providing grounding in safety and basic skills and knowledge for work in any electrotechnology discipline.

#### Contribution to the VCE/VCAL:

Students undertaking this program are eligible for Units at 1-2 & 3 level on completion.

#### Sample Units of Study:

- UEENEE101A Apply Occupational Health & Safety regulations, codes & practices  
In the workplace
- UEENEE141A Use of routine equipment/plant/technologies in an energy sector  
environment
- UEENEE142A Apply environmentally & sustainable procedures in the energy  
sector
- UEENEE179A Identify & select components, accessories and materials for energy  
sector work activities

# Certificate II in Electro-technology (Career Start)

Course Code: UEE22011



## Sample Units of Study: continued

CPCCOHS1001A	Work safely in the construction industry
UEENEEE130A	Provide solutions and report on routine electro-technology problems
HLTAID001	Provide cardiopulmonary resuscitation
UEENEEE148A	Carry out routine work activities in an energy sector environment
UEENEEE104A	Solve problems in multiple d.c circuits
HLTAID001	Provide cardiopulmonary resuscitation
UEENEEE143A	Produce routine tools/ devices for carrying out energy sector work activities
UEENEEP024A	Attach cords and plugs to electrical equipment for connection to a single phase 230 volt supply

## What to bring:

Students are required to wear sleeveless overalls (blue) and safety work boots (steel cap)

**Structured Workplace Learning (SWL)** - Recommended but not mandatory.

## Further Study:

Certificate III in Plumbing (Plumbing Apprenticeship)

Certificate IV in Plumbing and Services (specialising in Operations)

***Please note:** These details are subject to change and will require confirmation by the Registered Training Provider or TAFE.*

*VET enrolments are processed through secondary school VET Coordinators. If you are interested in completing this program, please contact your school VET Coordinator.*

